

Christus Victor (*Amen*) (*Duet Edition*)

(as recorded by Bryan Fowler and Terrian)

♠ A^b* / G / F Major ♠

Words and Music by Matt Boswell, Bryan Fowler,
Keith Getty, Kristyn Getty and Matt Papa
Arranged by Samuel Wilson

[*original key]

And they sing the song of Moses, the servant of God,
and the song of the Lamb

REVELATION 15:3

PARTS INCLUDED

Vocal Score (Duet, SATB), Piano
SATB Choir, Duet Vocals

Christus Victor (Amen)

(Duet Edition)

Words and Music by Matt Boswell, Bryan Fowler,
Keith Getty, Kristyn Getty and Matt Papa
Arranged by Samuel Wilson

Steadily ♩ = 72

Piano accompaniment for the first system. The key signature is B-flat major (three flats). The time signature is 4/4. The tempo is marked "Steadily ♩ = 72". The chords are Ab, Ebm7, Bbm7, and Dbadd9. The music features a melody in the right hand and a bass line in the left hand.

Duet Vocals (Male Solo) starting at measure 5. The key signature is B-flat major. The time signature is 4/4. The tempo is marked "Steadily ♩ = 72". The chords are Ab, Ebm7, Bbm7, and Dbadd9. The lyrics are: "O Most High, King of the a - ges, Great I AM, God of won - ders;".

Duet Vocals starting at measure 9. The key signature is B-flat major. The time signature is 4/4. The tempo is marked "Steadily ♩ = 72". The chords are Ab, Ebm7, and Bbm7. The lyrics are: "by the blood You have re - deemed us, led us through might - y".

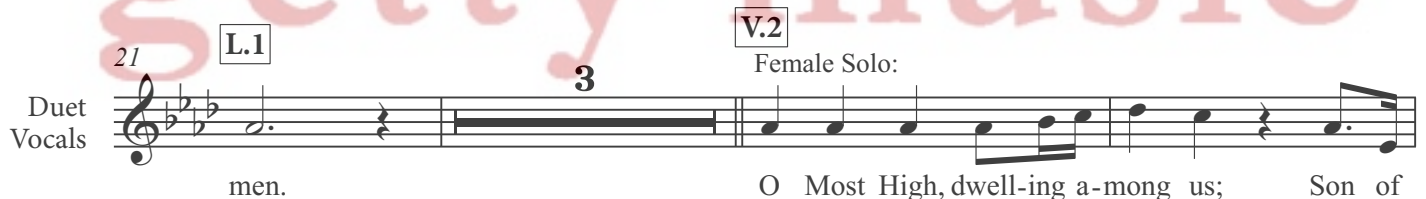
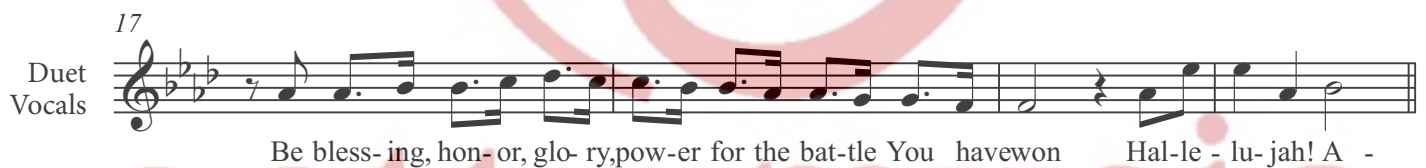
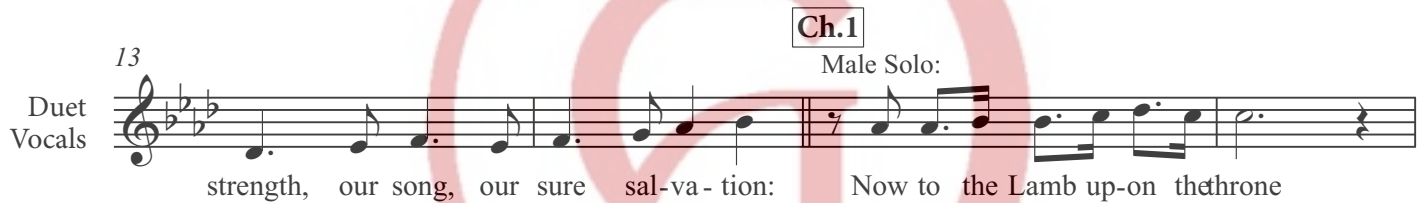
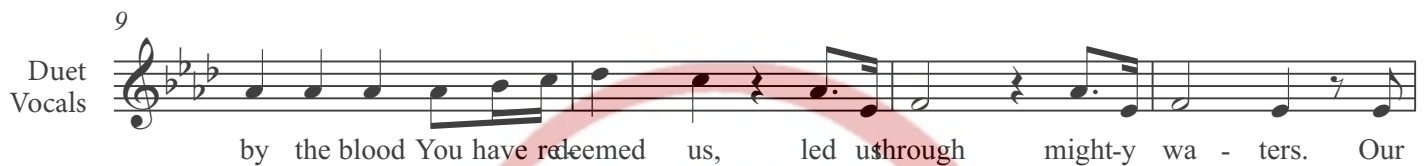
Duet Vocals starting at measure 12. The key signature is B-flat major. The time signature is 4/4. The tempo is marked "Steadily ♩ = 72". The chords are Dbadd9, Bbm7, Ab/C, Db, and Db/F Eb/G. The lyrics are: "wa - ters. Our strength, our song, our sure sal - va - tion:". The system ends with a double bar line.

Christus Victor (Amen)

(Duet Edition)

Words and Music by Matt Boswell, Bryan Fowler,
Keith Getty, Kristyn Getty and Matt Papa
Arranged by Samuel Wilson

Steadily ♩ = 72



27 Female Solo:

Duet Vocals

Man, sent for sin - ners. By Your blood You have re - dee - med us; spot-less

31

Choir

S.A. unis. *mf*

who lived, who died, who rose vic - to - rious:

T.B. unis. *mf*

Duet Vocals

Lamb, might-y Sav - ior who lived, who died, who rose vic - to - rious:

35 Ch.2

Choir

f div.

Now to the Lamb up-on the throne Be bless-ing, hon - or, glo - ry,

f div.

Female Solo:

Now to the Lamb up-on the throne Be bless-ing, hon - or, glo - ry,

Male Solo:

Now to the Lamb up-on the throne Be bless-ing, hon - or, glo - ry,

38 41

Choir

pow-er for the bat-tle You have won Hal-le - lu - jah! With ev-ery tribe and ev - ry

Duet Vocals

pow-er for the bat-tle You have won Hal-le - lu - jah! With ev-ery tribe and ev - ry

pow-er for the bat-tle You have won Hal-le - lu - jah! With ev-ery tribe and ev - ry

42

Choir

tongue, we join the an - them of the an - gels in the tri - umph of the

Duet Vocals

tongue, we join the an - them of the an - gels in the tri - umph of the

tongue, we join the an - them of the an - gels in the tri - umph of the