

www.gettymusic.com

PROMISES

(B^b / A / C Major)

Words and Music by Matt Boswell and Matt Papa

Arranged by Ben Shive and Samuel Wilson

PARTS INCLUDED:

Vocal (SAT) / Rhythm
Vocal, Piano
SATB Choir, Piano
SATB Choir
Piano
Chord Chart

***This product forms part of a full
orchestration, also available from
Getty Music, which includes:***

2 Flutes
2 Oboes
2 Clarinets in B^b
2 Bassoons

2 Horns in F
2 Trumpets in B^b
3 Trombones (III Opt. Tuba)

Timpani & 1 Percussion

Strings (incl. Keyboard String Reduction)



getty music

PO Box 120187
Nashville, TN 37212

Promises

Words and Music by
Matt Boswell and Matt Papa
Arranged by Ben Shive
and Samuel Wilson

Steady ♩ = 76

El. Gtr. Band IN: Gentle brush groove / shaker

N.C. B \flat E \flat /B \flat B \flat B \flat E \flat /B \flat B \flat



I can

V.1 B \flat E \flat /B \flat B \flat B \flat



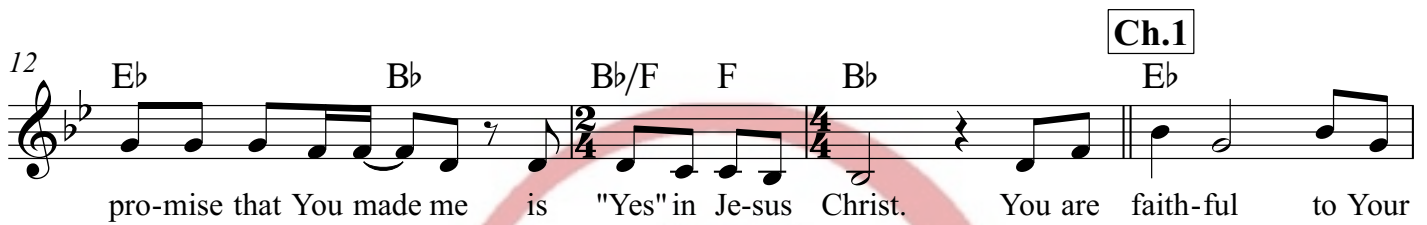
al-ways call You Fa-ther; You chose me as Your child. And Your word is al-ways faith-ful; You

B \flat /F F B \flat E \flat /B \flat B \flat



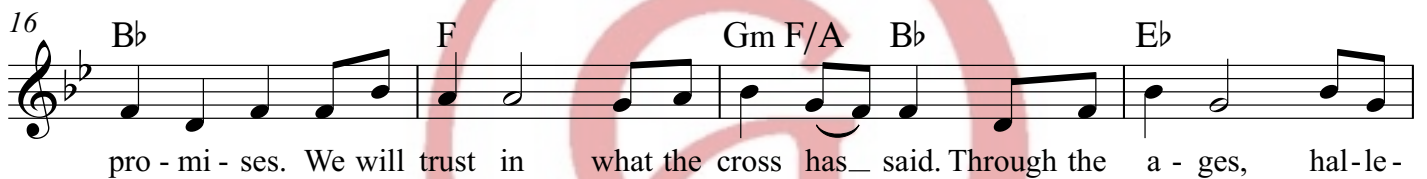
will not turn a-side. Now I live in full as-sur-ance, for my Sav-ior paid that price. Ev-'ry

Ch.1 E \flat B \flat B \flat /F F B \flat E \flat



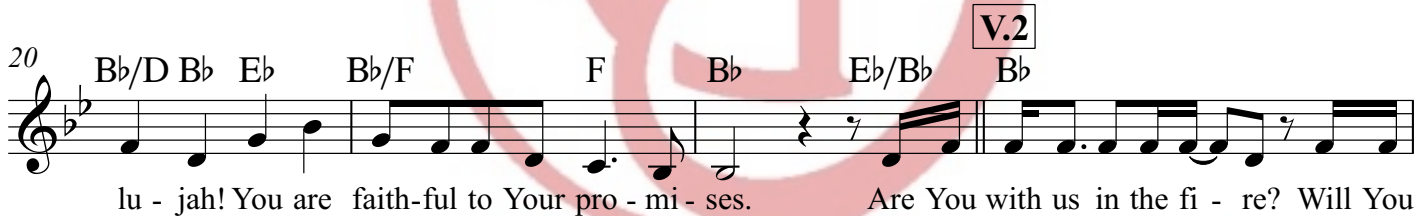
pro-mise that You made me is "Yes" in Je-sus Christ. You are faith-ful to Your

B \flat F G \flat F/A B \flat E \flat



pro - mi - ses. We will trust in what the cross has_ said. Through the a - ges, hal-le -

V.2 B \flat /D B \flat E \flat B \flat /F F B \flat E \flat /B \flat B \flat



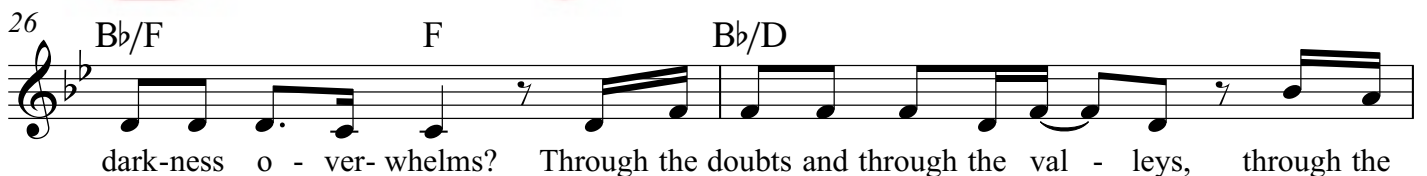
lu - jah! You are faith-ful to Your pro - mi - ses. Are You with us in the fi - re? Will You

E \flat B \flat B \flat



keep us in the storm? Are You still the light_ to guide us when the

B \flat /F F B \flat /D



dark-ness o - ver-whelms? Through the doubts and through the val - leys, through the

Voice
Piano

www.gettymusic.com

Promises

Words and Music by
Matt Boswell and Matt Papa
Arranged by Ben Shive
and Samuel Wilson

Steady $\text{♩} = 76$
N.C. B \flat Eb/B \flat B \flat B \flat Eb/B \flat B \flat

1. I can

6 **V.1** B \flat Eb/B \flat B \flat B \flat

al-ways call You Fa - ther; You chose me as Your child. And Your word is al-ways faith - ful; You

9 B \flat /F F B \flat Eb/B \flat B \flat

will not turn a - side. Now I live in full as - sur - ance, for my Sav - ior paid that price. Ev - ry

12 **Ch.1** Eb B \flat B \flat /F F B \flat Eb

pro - mise that You made me is "Yes" in Je - sus Christ. You are faith - ful to Your



Promises

Words and Music by
Matt Boswell and Matt Papa
Arranged by Ben Shive
and Samuel Wilson

Steady $\text{♩} = 76$
3

All voices, unis: **V.1**
mf



I can al-ways call You Fa-ther; You chose me as Your child. And Your



word is al-ways faith-ful; You will not turn a-side. Now I live in full as-sur-ance, for my



Sav-ior paid that price. Ev-ry pro-mise that You made me is "Yes" in Je - sus



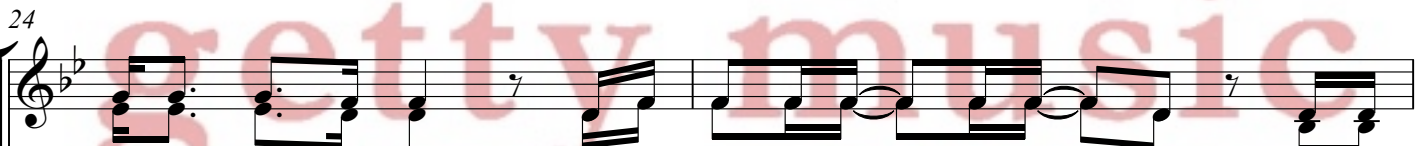
Christ. You are faith - ful to Your pro - mi - ses. We will



trust in what the cross has said. Through the a - ges, hal - le -



lu - jah! You are faith-ful to Your pro - mi - ses. Are You with us in the fi - re? Will You



keep us in the storm? Are You still the light to guide us when the



26

dark - ness o - ver - whelms? Through the doubts and through the val - leys, through the

Musical notation for measures 26-27, featuring a treble and bass clef with lyrics: "dark - ness o - ver - whelms? Through the doubts and through the val - leys, through the"

28

pas - sing years_ we find ev - 'ry pro - mise You have spo - ken is

Musical notation for measures 28-29, featuring a treble and bass clef with lyrics: "pas - sing years_ we find ev - 'ry pro - mise You have spo - ken is"

30

Ch.2

f

"Yes" in Je - sus Christ. You are faith - ful to Your pro - mi - ses. We will

Musical notation for measures 30-32, featuring a treble and bass clef with lyrics: "Yes" in Je - sus Christ. You are faith - ful to Your pro - mi - ses. We will". A dynamic marking of *f* is present above the first measure and below the second measure.

33

trust in what the cross has said. Through the a - ges, hal - le -

Musical notation for measures 33-35, featuring a treble and bass clef with lyrics: "trust in what the cross has said. Through the a - ges, hal - le -"

36

lu - jah! You are faith - ful to Your pro - mi - ses. You will

Musical notation for measures 36-37, featuring a treble and bass clef with lyrics: "lu - jah! You are faith - ful to Your pro - mi - ses. You will"

39 **Br.**

be our God. We will be Your peo - ple. You will be with us, keep us

42

from all e - vil. Ev - ry pro - mise made is a pro - mise kept. You are

Inst.

45

faith - ful to Your pro - mi - ses.

50

All voices, unis: *mp*

V.3

You be - gan this work with-in us; You will bring it to the end. You're the

53

cresc.

One who goes be-fore us. You will have the last "A - men!" So we set our hopes up-on this, and on

56

f *div.* *mf*

this we build our lives: all Your pro-mi-ses for-e - ver are "Yes" in Je-sus Christ! You are unis. *mf*

f *div.* *mf*

Promises

Words and Music by
Matt Boswell and Matt Papa
Arranged by Ben Shive
and Samuel Wilson

Steady ♩ = 76
N.C. B♭ Eb/B♭ B♭ B♭ Eb/B♭ B♭

6 **V.1** B♭ Eb/B♭ B♭ B♭ B♭/F F B♭

11 **Ch.1** Eb/B♭ B♭ Eb B♭ B♭/F F B♭ Eb

16 B♭ F Gm F/A B♭ Eb

20 **V.2** B♭/D B♭ Eb B♭/F F B♭ Eb/B♭ B♭ Eb B♭

Promises

Words and Music by Matt Boswell and Matt Papa

INTRO:

$\frac{4}{4}$ N.C. | B \flat E \flat /B \flat | B \flat | B \flat E \flat /B \flat | B \flat

B \flat E \flat /B \flat B \flat

I can always call You Father You chose me as Your child

B \flat B \flat /F F

And Your word is always faithful You will not turn a - side

B \flat E \flat /B \flat B \flat

Now I live in full assurance for my Savior paid that price

E \flat B \flat

Ev'ry promise that You made me

$\frac{2}{4}$ B \flat /F F $\frac{4}{4}$ B \flat
Is "Yes" in Jesus Christ

CHORUS

E \flat B \flat

You are faithful to Your promises

F Gm F/A B \flat

We will trust in what the cross has said

E \flat B \flat /D B \flat

Through the ages halle - lu - jah!

E \flat B \flat /F F B \flat

You are faithful to Your promi - ses

E \flat /B \flat B \flat

Are You with us in the fire will You keep us in the storm

B \flat

Are You still the light to guide us

B \flat /F F

When the darkness over - whelms

B \flat /D

Through the doubts and through the valleys

E \flat B \flat

Through the passing years we find

E \flat B \flat

Ev'ry promise You have spoken

B \flat /F F B \flat

Is "Yes" in Jesus Christ

CHORUS

E \flat B \flat

You are faithful to Your promises

Gm F Gm F/A B \flat

We will trust in what the cross has said

B \flat /D E \flat B \flat /D

Through the ages halle - lu - jah!

E \flat B \flat /F F B \flat

You are faithful to Your promi - ses

BRIDGE

E \flat B \flat F Gm

You will be our God we will be Your people

E \flat B \flat F Gm

You will be with us keep us from all evil

E \flat B \flat F Gm

Ev'ry promise made is a promise kept

E \flat F

You are faithful to Your promi -

INST.

B \flat | E \flat B \flat | B \flat | B \flat /F F | E \flat /F F
-ses

B \flat E \flat B \flat

You be - gan this work within us You will bring it to the end

B \flat

You're the One who goes before us

B \flat /F F

You will have the last "A - men!"

B \flat /D B \flat

So we set our hopes up - on this

E \flat F B \flat B \flat /D

And on this we build our lives

E \flat Gm E \flat

All your promises for - ever

$\frac{2}{4}$ F^{sus} F $\frac{4}{4}$ B \flat

Are "Yes" in Jesus Christ

CHORUS

E \flat B \flat

You are faithful to Your promises

F Gm F/A B \flat

We will trust in what the cross has said

B \flat /D E \flat B \flat /D

Through the ages halle - lu - jah!

E \flat B \flat /F F Gm

You are faithful to Your promi - ses

E \flat B \flat /F F B \flat E \flat /B \flat | B \flat

You are faithful to Your pro - mi - ses

E \flat B \flat F Gm

You will be our God we will be Your people

E \flat B \flat F Gm

You will be with us keep us from all evil

E \flat B \flat /D F Gm

Ev'ry promise made is a promise kept

E \flat F Gm

You are faithful to Your pro - mi - ses

E \flat B \flat /F F B \flat ||

You are faithful to Your pro - mi - ses